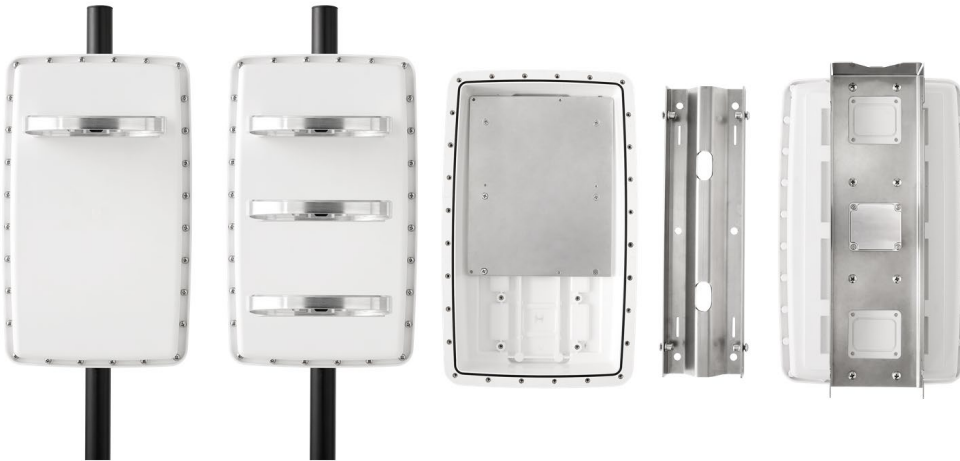


Whisper Technologies Enclosure

Marine grade plastic enclosure to house and protect a variety of components.

Robust in any environment: -10 to +50°C / IP66 and IK10

Easy quick mounting system installed in two-part stainless-steel bracket.



- ✓ Gear trays to mount internal components
- ✓ Custom designed camera brackets
- ✓ Ease of installation
- ✓ Vandal resistant
- ✓ Weatherproof

Whisper Technologies offer unique enclosures to configure a variety of electronic components enabling applications such as:

- ✓ Rapid Deployment Camera systems, up to 3 cameras per unit
- ✓ LTE Router for Cellular, WiFi and wired internet connectivity
- ✓ PoE Switches to power cameras and IoT devices
- ✓ LoRaWAN Gateway
- ✓ Radar
- ✓ Antennas, internally or externally mounted
- ✓ Weather Station

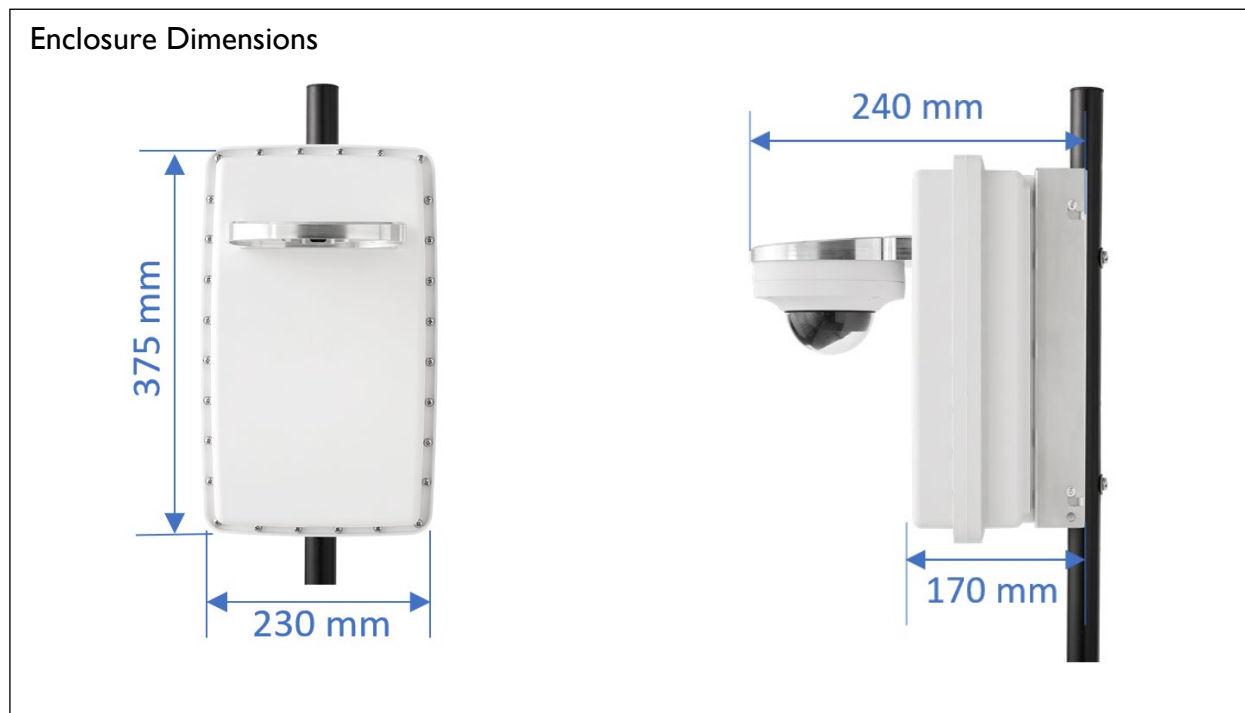
Ava Dome Plate

Eagle Eye Dome Plate

MOBOTIX PT Mount Plates



Technical Specifications – Whisper Technologies Enclosure	
Model	WSPR-Enc
Camera Mounting Plates	WSPR-Plate-Ava (dome), WSPR-Plate-EEN (dome), WSPR-Plate-MxPTMount, WSPR-Blank (bullet wall mount)
Casing	New generation ABS plastic housing, for ultimate UV protection. Top lid fixed by 28 x screws into brass inserts. Marine grade 316 stainless mounting bracket.
Environment	Indoor / Outdoor -10 to +50°C, IP66 and IK10
Weight	4.2 Kg with mounting bracket and dome mounting plate



Ordering Information

- WSPR-Enc
- WSPR-Plate-Ava
- WSPR-Plate-EEN
- WSPR-Plate-MxPTMount
- WSPR-Blank
- White Labelling

Australia: info@timeandfocus.com.au
+61 477 720 242

New Zealand: enquiries@wspr.nz
+64 21 764 205

Website: <https://www.wspr.nz/>